

PART OF THE SE 1/4, OF SECTION 18, T.6N., R.1W., S.L.B. & M.

249

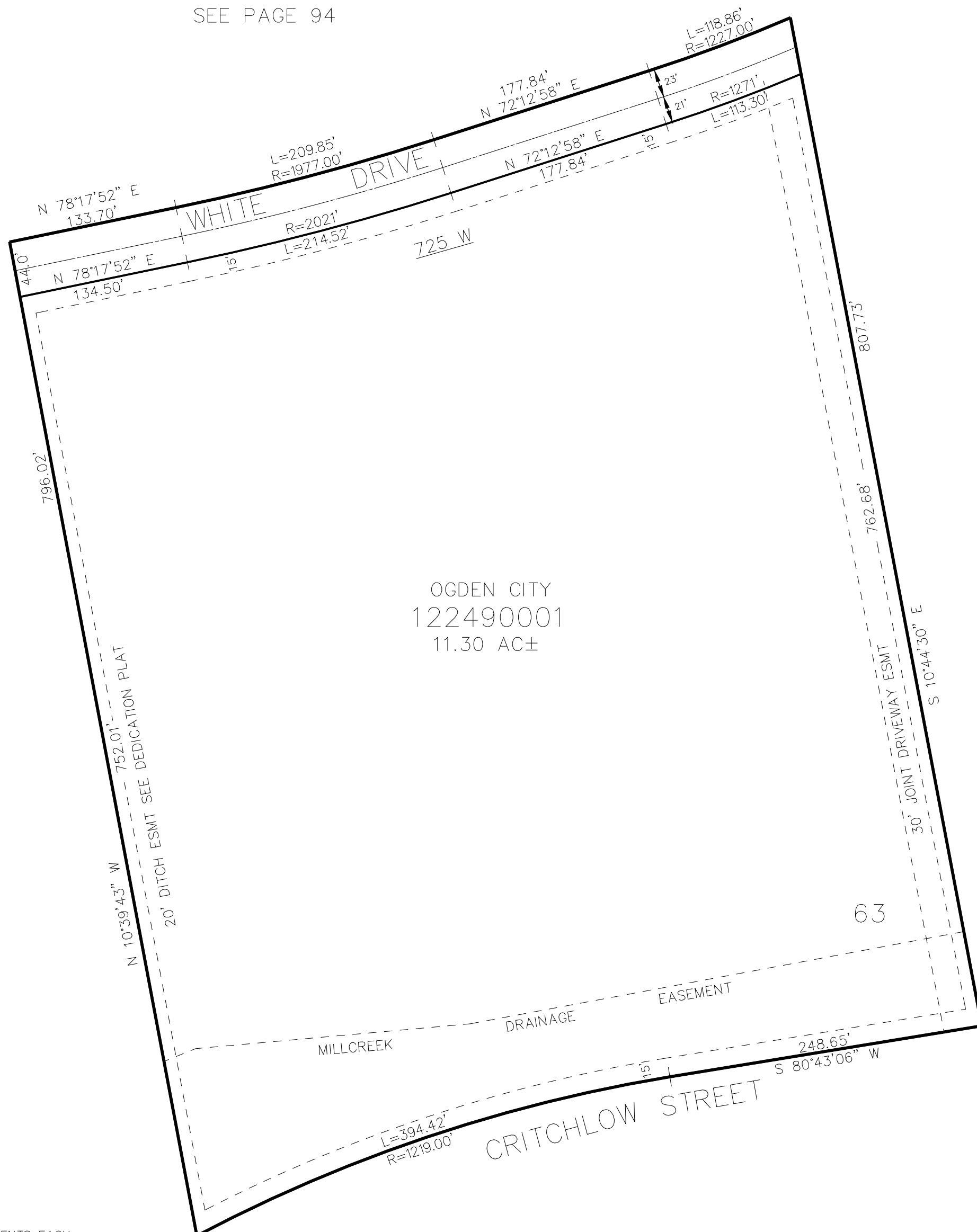
BUSINESS DEPOT OGDEN PLAT 24

IN OGDEN CITY

TAXING UNIT: 359

SCALE 1" = 80'

SEE PAGE 94



SEE PAGE 94

SEE PAGE 208

SEE PAGE 216

FOR COMPLETE ENG DATA SEE
ORIGINAL DEDICATION PLAT IN
BOOK 73, PAGE 15 OF RECORDS.

10' UTILITY & DRAINAGE EASEMENTS EACH
SIDE OF PROPERTY LINES AS INDICATED
BY DASHED LINES EXCEPT AS OTHERWISE
SHOWN.